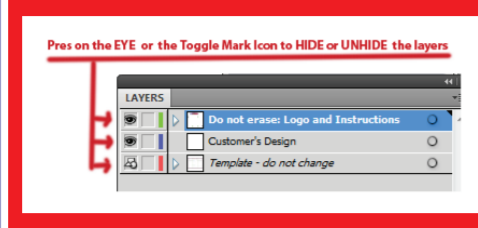
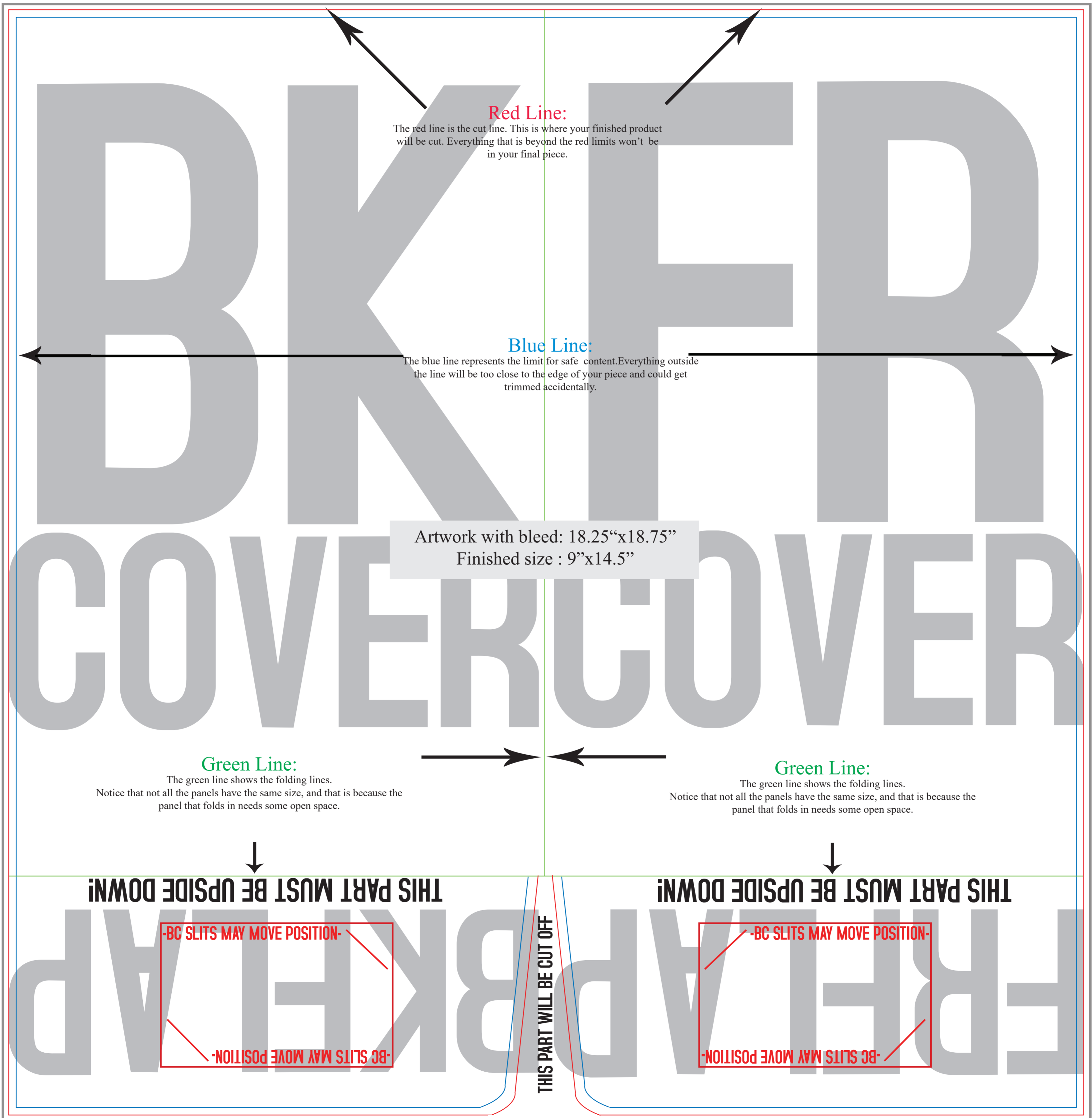


This template is meant for:  
 Presfold

9x14.5



Once your artwork has been designed you should hide the layers that contain the lines and marks. On your layer panel (F7), named "Template - do not change" - (Color Red) and press on the eye or the toggle icon.  
 The layer on which you will be working is called "Customer's Design" (color blue)



**Red Line:**

The red line is the cut line. This is where your finished product will be cut. Everything that is beyond the red limits won't be in your final piece.

**Blue Line:**

The blue line represents the limit for safe content. Everything outside the line will be too close to the edge of your piece and could get trimmed accidentally.

Artwork with bleed: 18.25"x18.75"  
 Finished size : 9"x14.5"

**Green Line:**

The green line shows the folding lines. Notice that not all the panels have the same size, and that is because the panel that folds in needs some open space.

**Green Line:**

The green line shows the folding lines. Notice that not all the panels have the same size, and that is because the panel that folds in needs some open space.

THIS PART MUST BE UPSIDE DOWN!

-BC SLITS MAY MOVE POSITION-

-BC SLITS MAY MOVE POSITION-

THIS PART WILL BE CUT OFF

THIS PART MUST BE UPSIDE DOWN!

-BC SLITS MAY MOVE POSITION-

-BC SLITS MAY MOVE POSITION-